

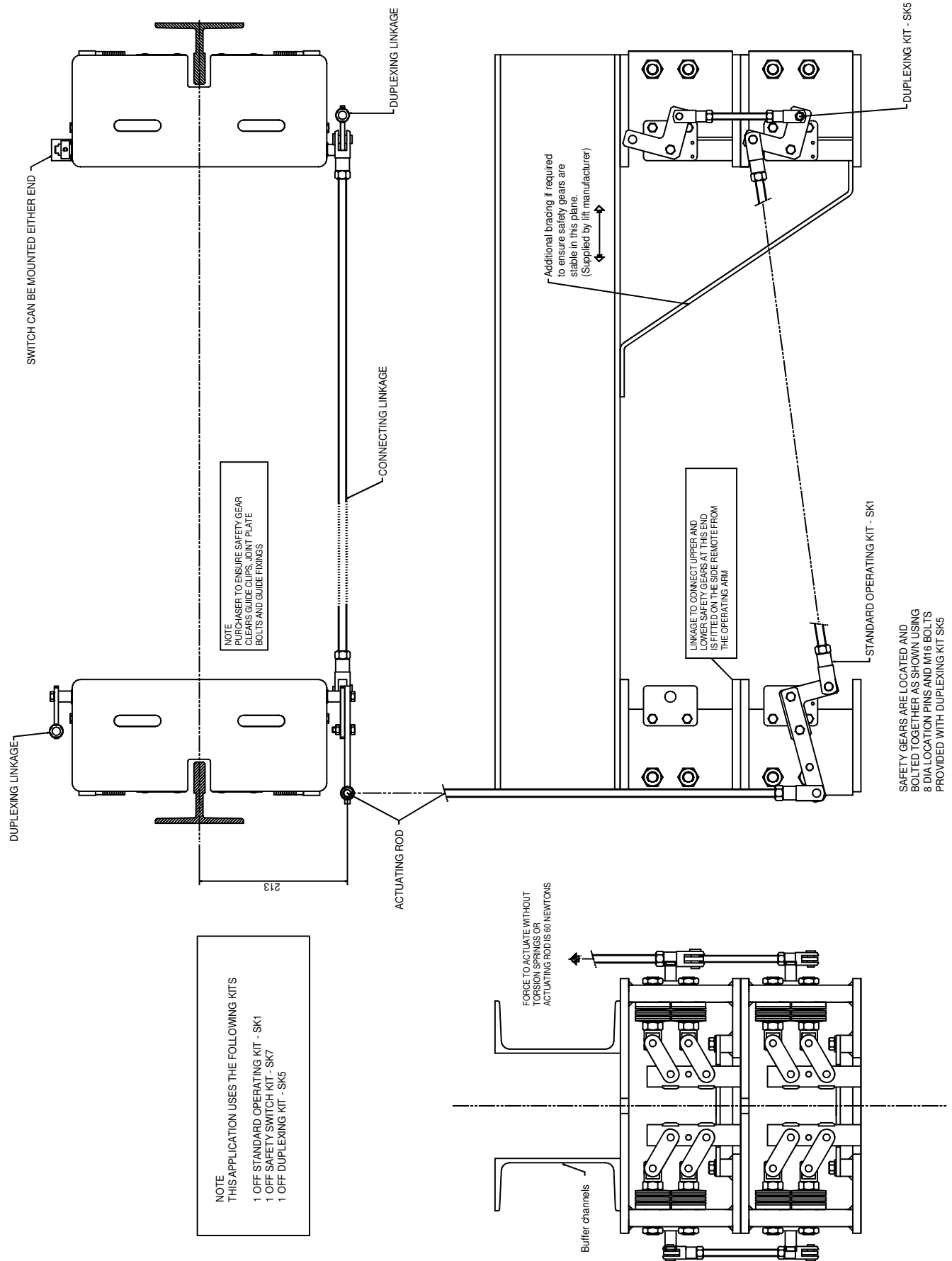
GENERAL ARRANGEMENT - DUPLEX MOUNTING

FIGURE NUMBER

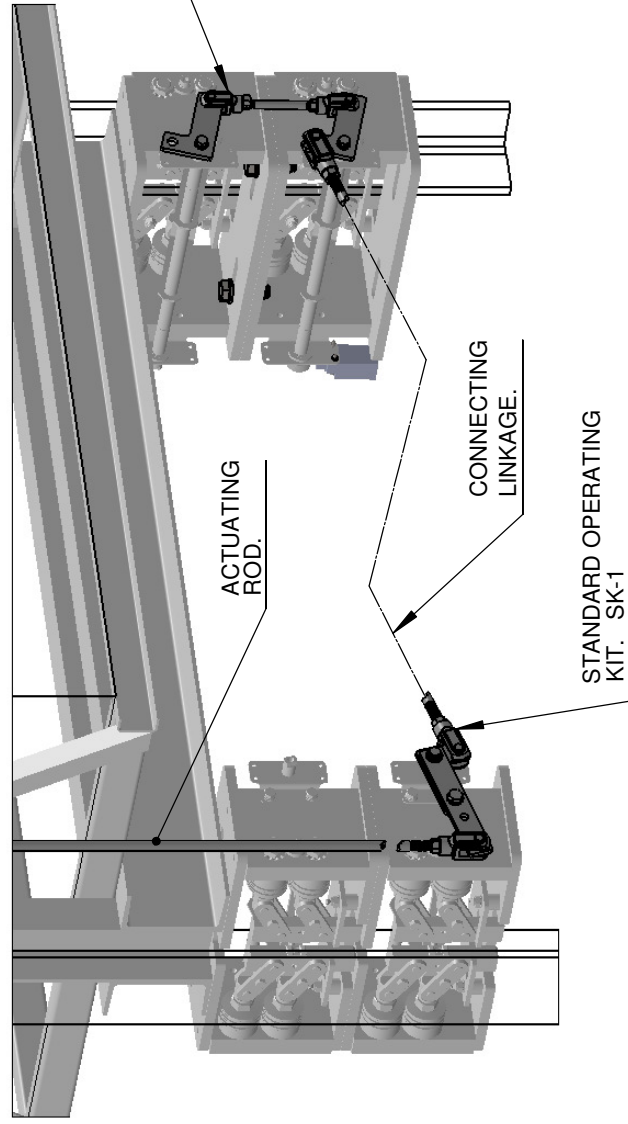
TD1.5

YEAR ISSUE

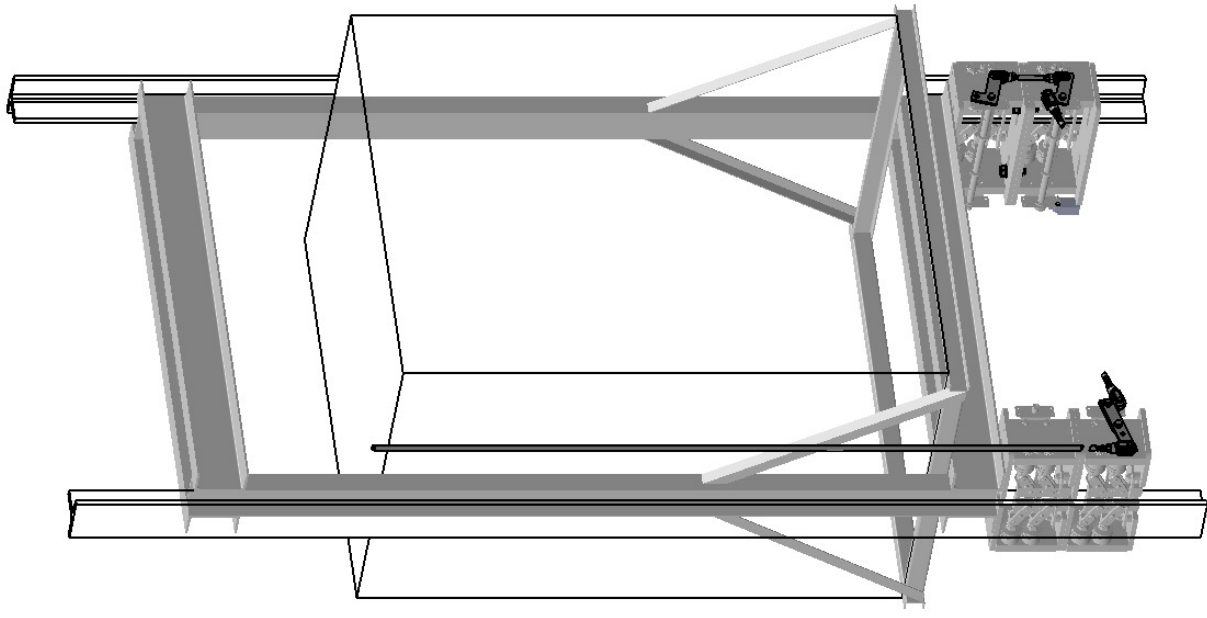
2011 C



FRONT VIEW



DUPLEXING LINKAGE KIT SK-5



REAR VIEW

FRONT VIEW

See sheet 1 of 2 for dimension information.

GENERAL ARRANGEMENT - DUPLEX MOUNTING

<p>ATWELL INTERNATIONAL LTD BALL MILL TOP BUSINESS PARK HALLOW WORCESTER WR2 6PD Tel: 01905 641881 Fax: 01905 641298 Web: www.atwellinternational.com Email: info@atwellinternational.com</p>	<p>THIS DRAWING IS CONFIDENTIAL AND MUST NOT BE COPIED OR DISCLOSED WITHOUT THE WRITTEN CONSENT OF ATWELL INTERNATIONAL</p>	<p>DIMENSIONS & TOLERANCES (APPLY AFTER PAINTING / PLATING) UNLESS OTHERWISE STATED DIMENSIONS ARE IN mm ONE PLACE DECIMAL (e.g. 55.5) ± 0.5mm TWO PLACE DECIMAL (e.g. 55.25) ± 0.1mm ANGULAR DIMENSIONS ± 0.5 DEGREES.</p>	<p>MATERIAL: FINISH: DO NOT SCALE DRAWING.</p>	<p>DESCRIPTION: TD-1.5 DRAWING NO. SHEET 2 OF 2</p>	<p>ISSUE NO. C</p>
<p>DRAWN: JAE</p>	<p>DATE: 19 MAY 2011</p>	<p>CHECKED:</p>			