

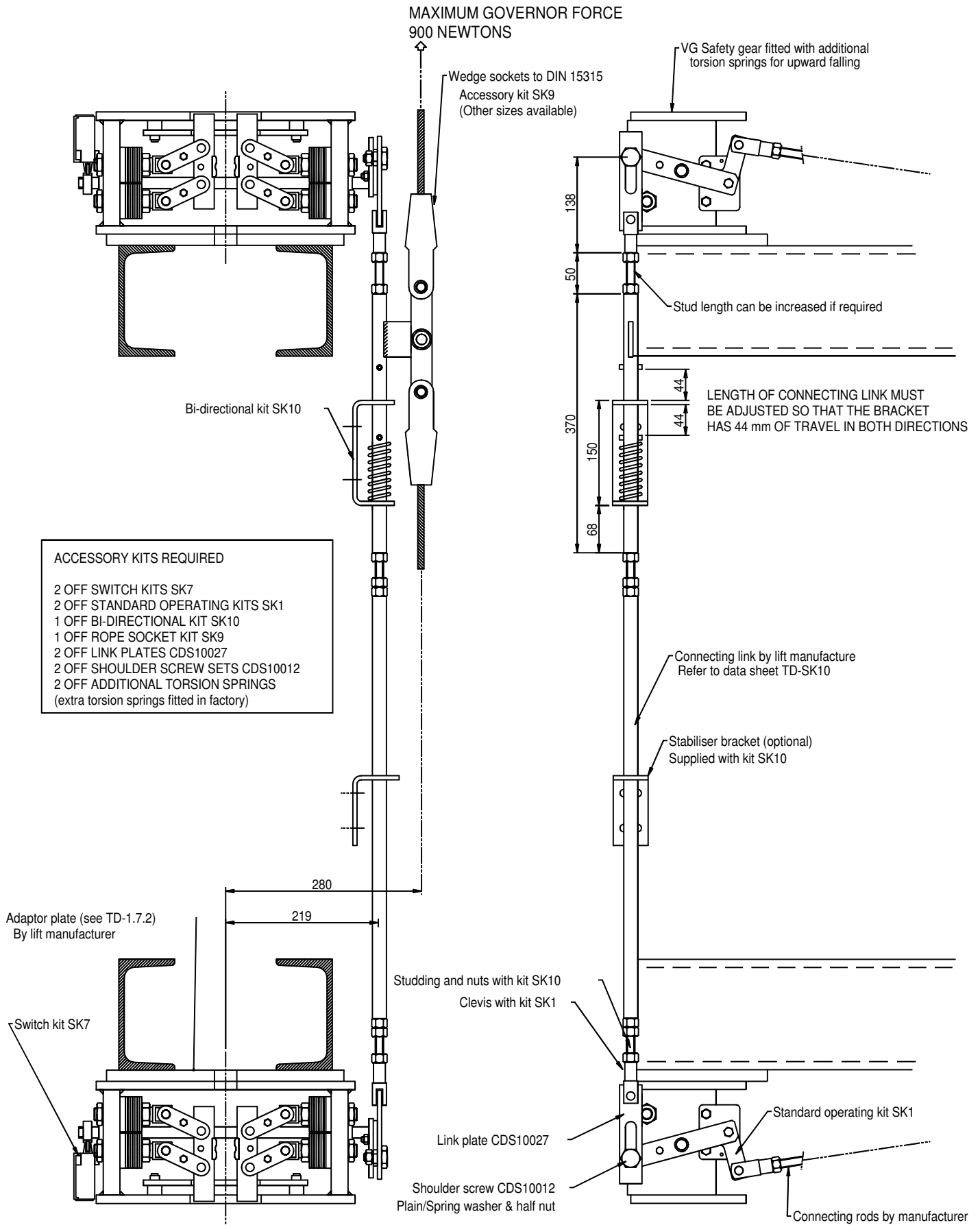
# KIT SK10 WITH DUAL ACTING VG SAFETY GEARS

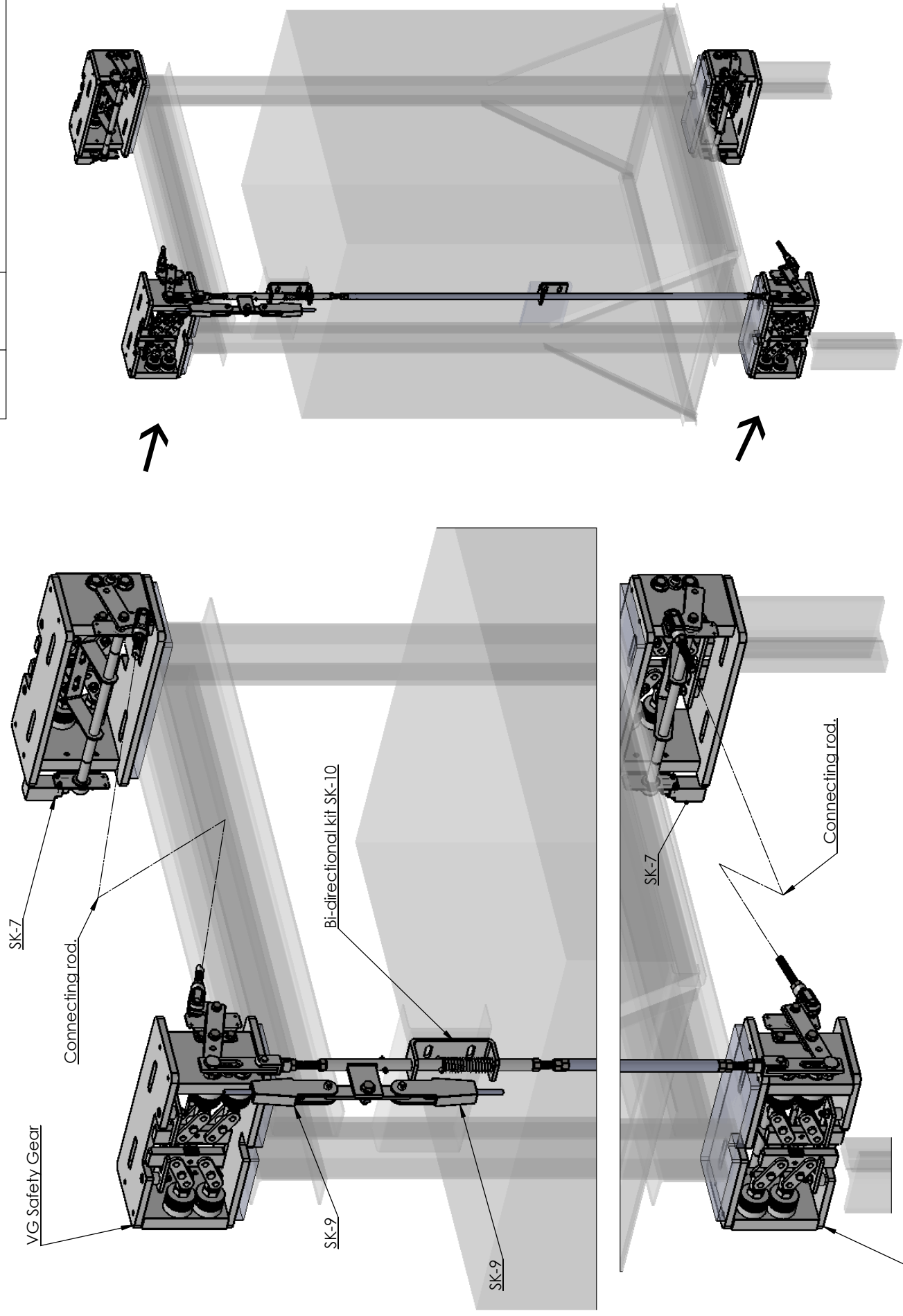
FIGURE NUMBER

TD-1.10.3

YEAR ISSUE

2005 E





KIT SK10 WITH DUAL ACTING VG SAFETY GEARS.

<p><b>ATWELL INTERNATIONAL LTD</b>          BALL MILL, TOP BUSINESS PARK          HALLOW          WORCESTER WR2 6PD          Tel: 01905 641881 Fax: 01905 641298          Web: www.atwellinternational.com          Email: info@atwellinternational.com</p>	<p>THIS DRAWING IS CONFIDENTIAL AND MUST NOT BE COPIED OR DISCLOSED WITHOUT THE WRITTEN CONSENT OF ATWELL INTERNATIONAL</p>	<p>DIMENSIONS &amp; TOLERANCES (APPLY AFTER PAINTING / PLATING) UNLESS OTHERWISE STATED DIMENSIONS ARE IN mm          ONE PLACE DECIMAL (e.g. 55.5) ± 0.5mm          TWO PLACE DECIMAL (e.g. 55.55) ± 0.1mm          ANGULAR DIMENSIONS ± 0.5 DEGREES.</p>	<p>DESCRIPTION:          DRAWING NO. TD-1.10.3          SHEET 2 OF 2</p>
<p>DRAWN: JAE          DATE: 12 SEPT 2011          CHECKED:</p>	<p>MATERIAL:          FINISH:          DO NOT SCALE DRAWING.</p>		